

Producing More Native Trout in California's Hatchery and Stocking Program



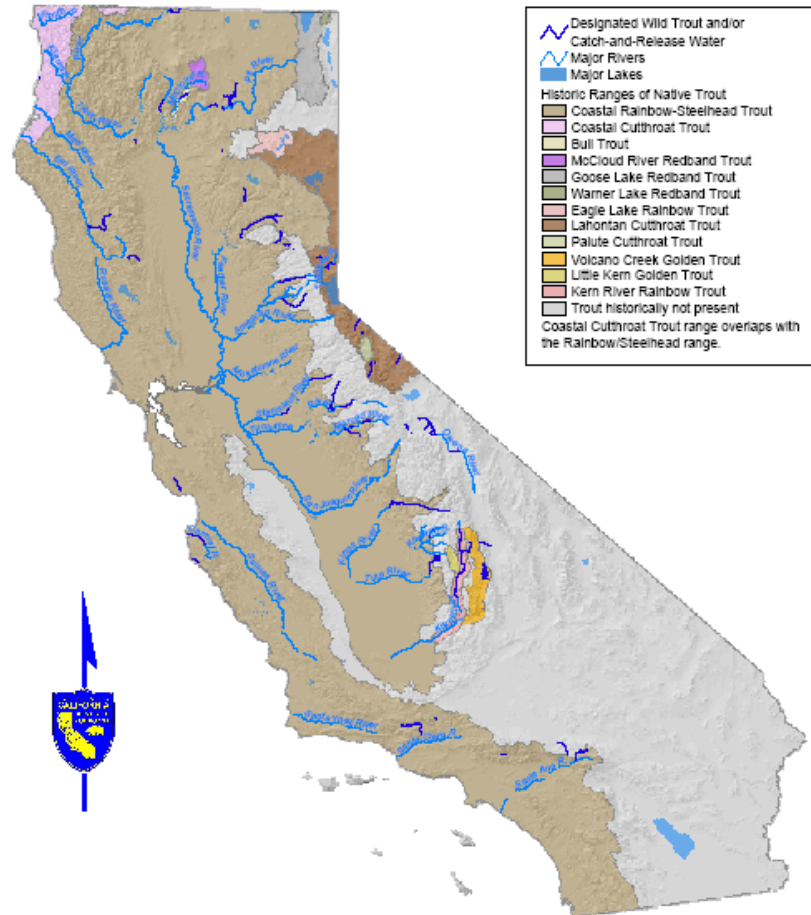
Image downloaded from www.troutstreamdesigns.com

©2004 Andrew Maurer



Inland Trout of California

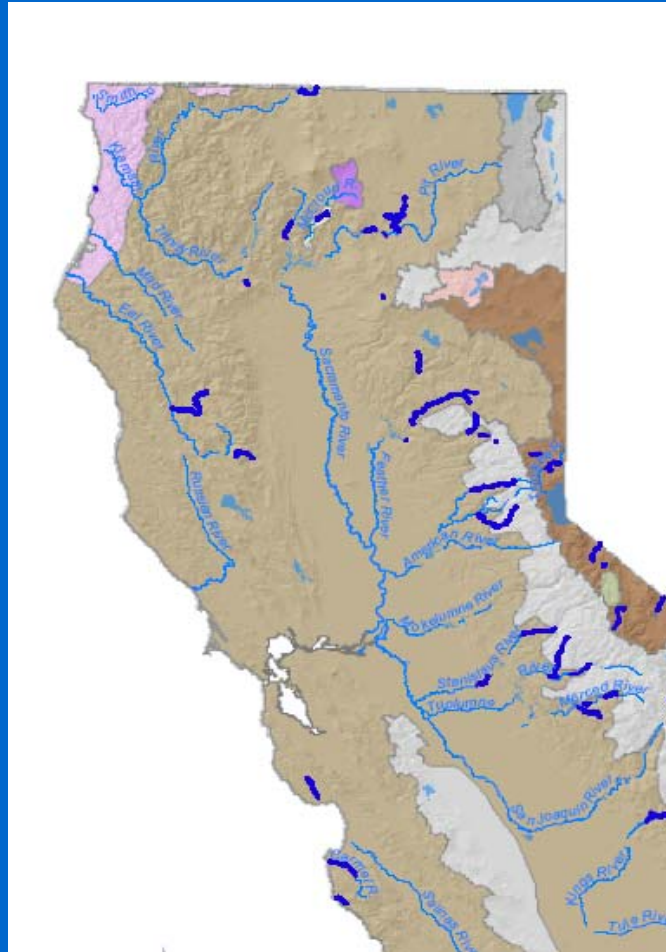
Historic Ranges and Designated Wild Trout and Catch & Release Waters



Concept by James S. Hopelain, DFG Senior Fishery Biologist. Spatial data processed by Michael Byrne, former DFG GIS Specialist. Historic ranges as described by Eric Gerstung, and Designated Wild Trout and Catch-and-Release waters verified by Chuck Knutson and Dave Lentz, DFG Fishery Biologists. Map assembled by Rod Gonzalez, DFG GIS Analyst.

\\B142W081d1\project\trout\range\TroutRangeHS_NoHarta.mxd

Historic Native Trout Distribution in Northern California



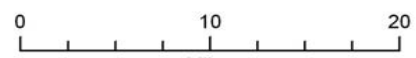
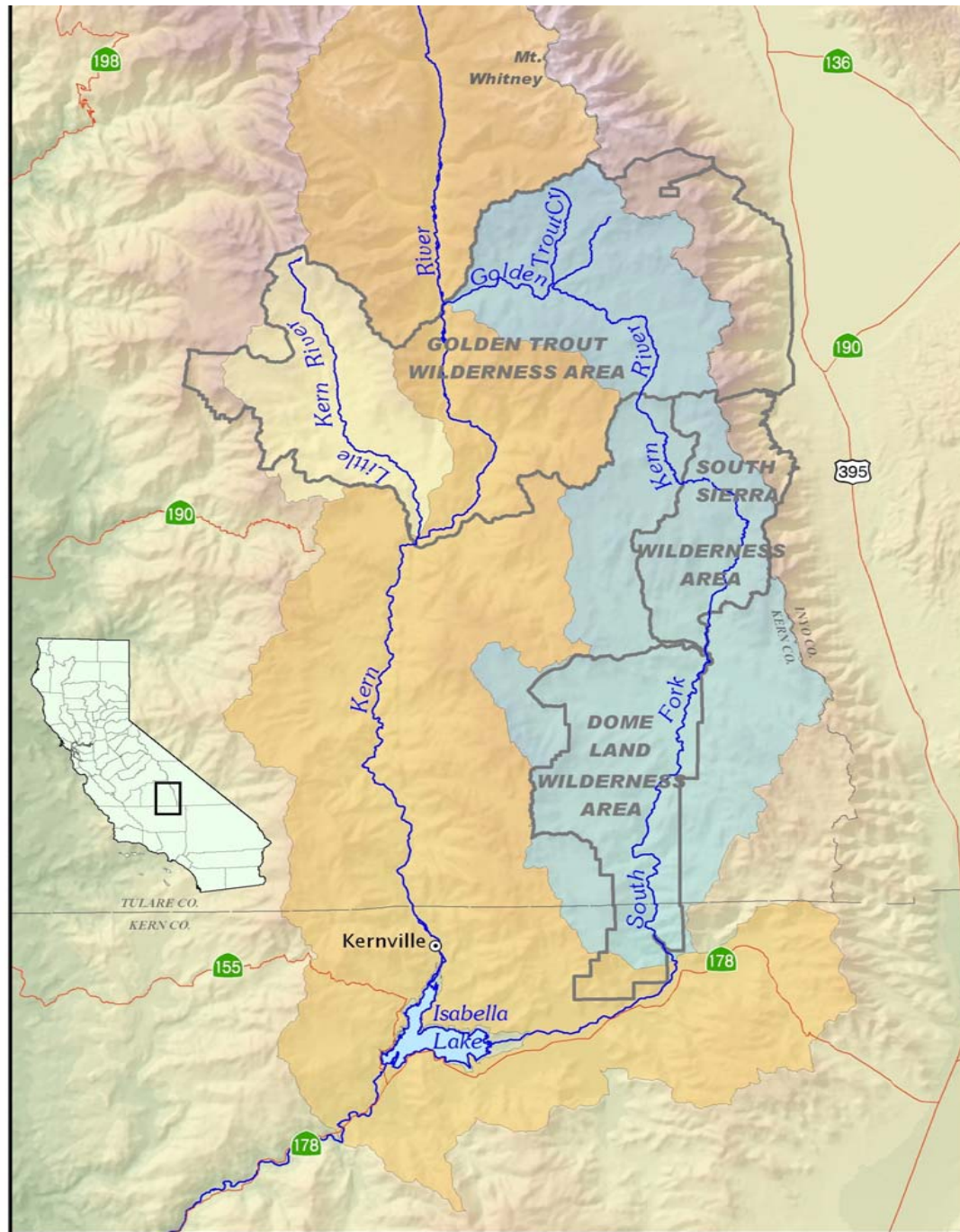






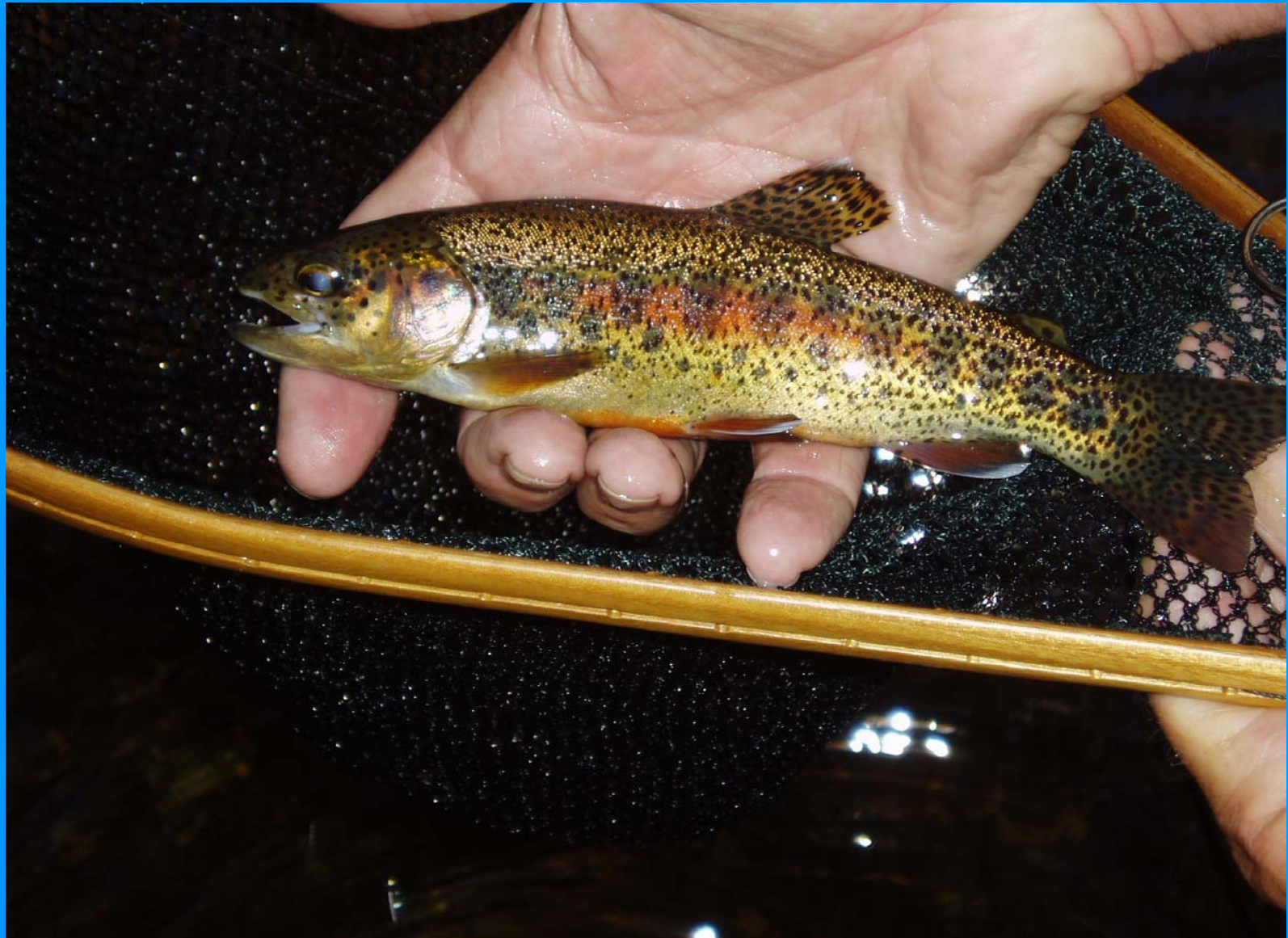






Historic Trout Ranges







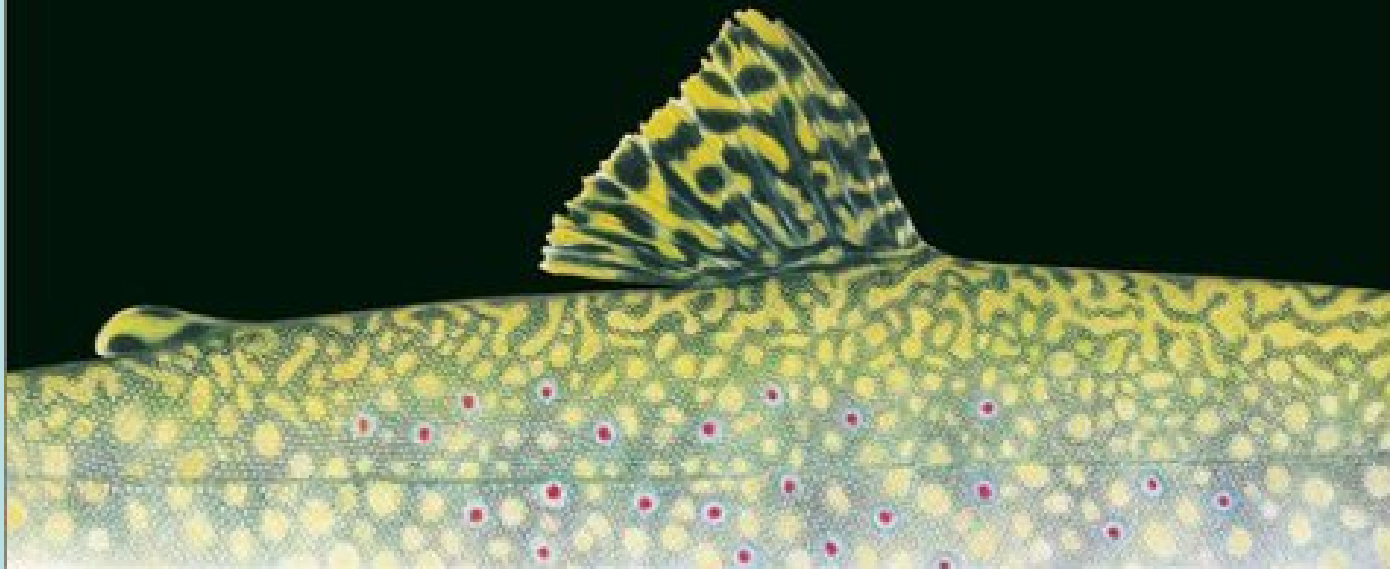
ROBERT J. BEHNKE

TROUT AND SALMON

OF NORTH AMERICA

Illustrated by JOSEPH R. TOMELLERI

FOREWORD BY THOMAS MCGUANE







en from ANTARCTICA - Exploring a Fragile Eden by Jonathan and Angela Scott, published by Collins



PRBO / Benjamin L. Saenz

Assembly Bill No. 7

CHAPTER 689

An act to add Sections 13007 and 13008 to the Fish and Game Code, relating to sport fishing.

[Approved by Governor October 7, 2005. Filed with
Secretary of State October 7, 2005.]

LEGISLATIVE COUNSEL'S DIGEST

AB 7, Cogdill. Sport fishing: license revenues: fish hatcheries and inland fisheries.

Under existing law, all moneys collected under the provisions of the Fish and Game Code are deposited into the Fish and Game Preservation Fund, unless otherwise provided.

Existing law provides that, of the moneys collected from fees for lifetime sportsman's licenses, lifetime hunting licenses, and lifetime sport fishing licenses, \$20 from the initial issuance of each lifetime license is deposited into the Fish and Game Preservation Fund for the costs of hunting and sport fishing programs, and the rest is deposited in the Lifetime License Trust Account within that fund, the principal of which is to be used for investment, except as specified.

This bill instead would provide that, commencing July 1, 2006, 33 ⅓% of the fees derived from the issuance of all sport fishing licenses, with the exception of revenue currently designated for deposit into the Abalone Restoration and Preservation Account be deposited into the Hatchery and Inland Fisheries Fund, which the bill would establish in the State Treasury. The bill would provide that moneys in the fund may be used, upon appropriation by the Legislature, to support programs of the Department of Fish and Game related to the management, maintenance, and capital improvement of California's fish hatcheries, the Heritage and Wild Trout Program, and enforcement activities related thereto, and to support other activities eligible to be funded from revenue generated by sport fishing license fees.

The bill would require the sport fishing license fees collected and subject to appropriation to be used to attain state fish hatchery production goals relating to the release of trout, as specified, to fund regional permanent positions, seasonal aides, and other activities in the Heritage and Wild Trout Program, and to the department to initiate and manage the restoration of naturally indigenous genetic stocks of trout to their original California source watersheds. The bill would authorize the use of funds in the Hatchery and Inland Fisheries Fund to be used for the purpose of obtaining scientifically valid genetic determinations of California native trout stocks.



AB 7 Requirements



- **Dedicate 1/3 of sport fishing license revenue for hatchery trout production and Heritage and Wild trout management programs**
- **Establishes goals for hatchery trout production tied to fishing license sales**
- **Requires hatchery production of native (heritage) trout with goals of five “species” and 25% of total hatchery production by 2012**

California Heritage Trout

Species/subspecies

Coastal Cutthroat trout (*Oncorhynchus clarki clarki*)
Lahontan cutthroat trout (*O. c. henshawi*)
Paiute cutthroat trout (*O. c. seleniris*)
Coastal rainbow trout/steelhead (*O. mykiss irideus*)
Eagle Lake rainbow trout (*O. m. aquilarum*)
Kern River rainbow trout (*O. m. gilberti*)
Goose Lake redband trout (*O. m. subspecies*)
McCloud River redband trout (*O. m. subspecies*)
Warner Lakes redband trout (*O. m. subspecies*)
Little Kern golden trout (*O. m. whitei*)
California golden trout (*O. m. aguabonita*)
Bull trout (char) (*Salvelinus confluentus*) (extinct in CA)

Native Trout Working Group

Develop Recommendations to Fisheries Chief:
to pursue AB 7 native trout production goals



The department shall, by July 1, 2011, ensure that 25 percent of the fish produced by state fish hatcheries are used for the purpose of initiating and managing the restoration of naturally indigenous stocks of trout to their original California source watersheds. This paragraph shall not be construed to prohibit the department from using surplus fish in waters outside of their original California source watersheds. All trout restored pursuant to this paragraph shall be native California trout, as defined in Section 7261. (A) By July 1, 2009, 15 percent and at least 4 species, not including the coastal rainbow trout/steelhead.

(B) By July 1, 2010, 20 percent and at least 4 species, not including the coastal rainbow trout/steelhead.

(C) By July 1, 2011, and thereafter, 25 percent and at least 5 species, not including the coastal rainbow trout/steelhead.

South Fork Kern River Schaeffer Barrier







Species	Criteria Score
Eagle Lake rainbow	15
Lahontan cutthroat	12
California golden	7
Coastal cutthroat	6
Kern River rainbow	4
Little Kern golden	2
McCloud redband	1
Goose Lake redband	1
Paiute cutthroat	0
Warner Lakes redband	0

Ranking Criteria Scoring range 0-3 or 0-5
Existing brood stock availability
Relative abundance of egg production
DFG hatchery production experience with species
Suitable stocking locations in source watershed(s)
Suitable stocking locations outside source watershed



Amended version of “AB 7” (2008)

(3) The department shall, by January 1, 2012, ensure that the numbers of native California trout, as defined in Section 7261, produced are sufficient to equal or exceed 25 percent of the numbers of trout produced by the state fish hatcheries to comply with paragraph (1). The native trout produced in accordance with this paragraph shall support department efforts to protect and restore cold water ecosystems, maintain biological diversity, and provide diverse angling opportunities. Coastal rainbow trout/steelhead produced for anadromous mitigation purposes shall be excluded from contributing to the native trout production goals required by this paragraph. Coastal rainbow trout/steelhead propagated for purposes other than anadromous mitigation and released into their source watersheds may be counted toward the 25 percent native trout production goal. Native trout produced shall be naturally indigenous stocks from their original source watersheds. Native trout produced may be released into watersheds other than their original source watershed only if the released trout will cause no harm to other native trout in their original watersheds. The department shall attain the 25 percent production goal according to the following schedule:

- (A) By January 1, 2010, 15 percent and at least four species.
- (B) By January 1, 2011, 20 percent and at least four species.
- (C) By January 1, 2012, 25 percent and at least five species.

Amended version of “AB 7” (2008)

(3) The department shall, by January 1, 2012, ensure that the numbers of native California trout, as defined in Section 7261, produced are sufficient to equal or exceed 25 percent of the numbers of trout produced by the state fish hatcheries to comply with paragraph (1). The native trout produced in accordance with this paragraph shall support department efforts to protect and restore cold water ecosystems, maintain biological diversity, and provide diverse angling opportunities. Coastal rainbow trout/steelhead produced for anadromous mitigation purposes shall be excluded from contributing to the native trout production goals required by this paragraph. Coastal rainbow trout/steelhead propagated for purposes other than anadromous mitigation and released into their source watersheds may be counted toward the 25 percent native trout production goal. Native trout produced shall be naturally indigenous stocks from their original source watersheds. Native trout produced may be released into watersheds other than their original source watershed only if the released trout will cause no harm to other native trout in their original watersheds. The department shall attain the 25 percent production goal according to the following schedule:

- (A) By January 1, 2010, 15 percent and at least four species.
- (B) By January 1, 2011, 20 percent and at least four species.
- (C) By January 1, 2012, 25 percent and at least five species.

DRAFT

**HATCHERY AND STOCKING
PROGRAM**

**ENVIRONMENTAL IMPACT
REPORT/**

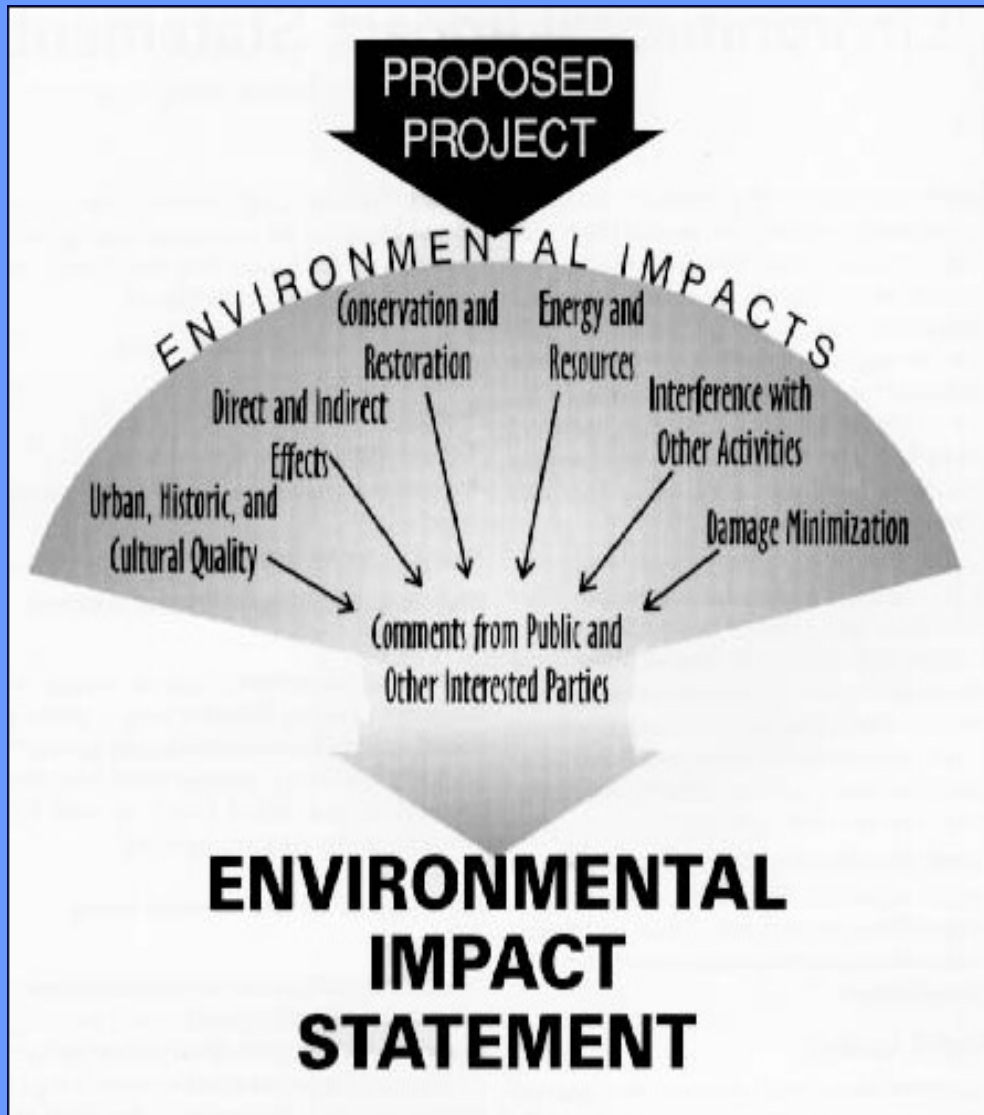
**ENVIRONMENTAL IMPACT
STATEMENT**

P R E P A R E D F O R : California
Department of Fish and Game 830 S
Street, Sacramento, CA 95814 Contact:
Jim Starr and U.S. Fish and Wildlife
Service 2800 Cottage Way, Room
W-2606 Sacramento, CA 95825
Contact: Bart Prose

P R E P A R E D B Y : ICF Jones &
Stokes 630 K Street, Suite 400,
Sacramento, CA 95814 Contact: Mike
Rushton (916) 737-3000

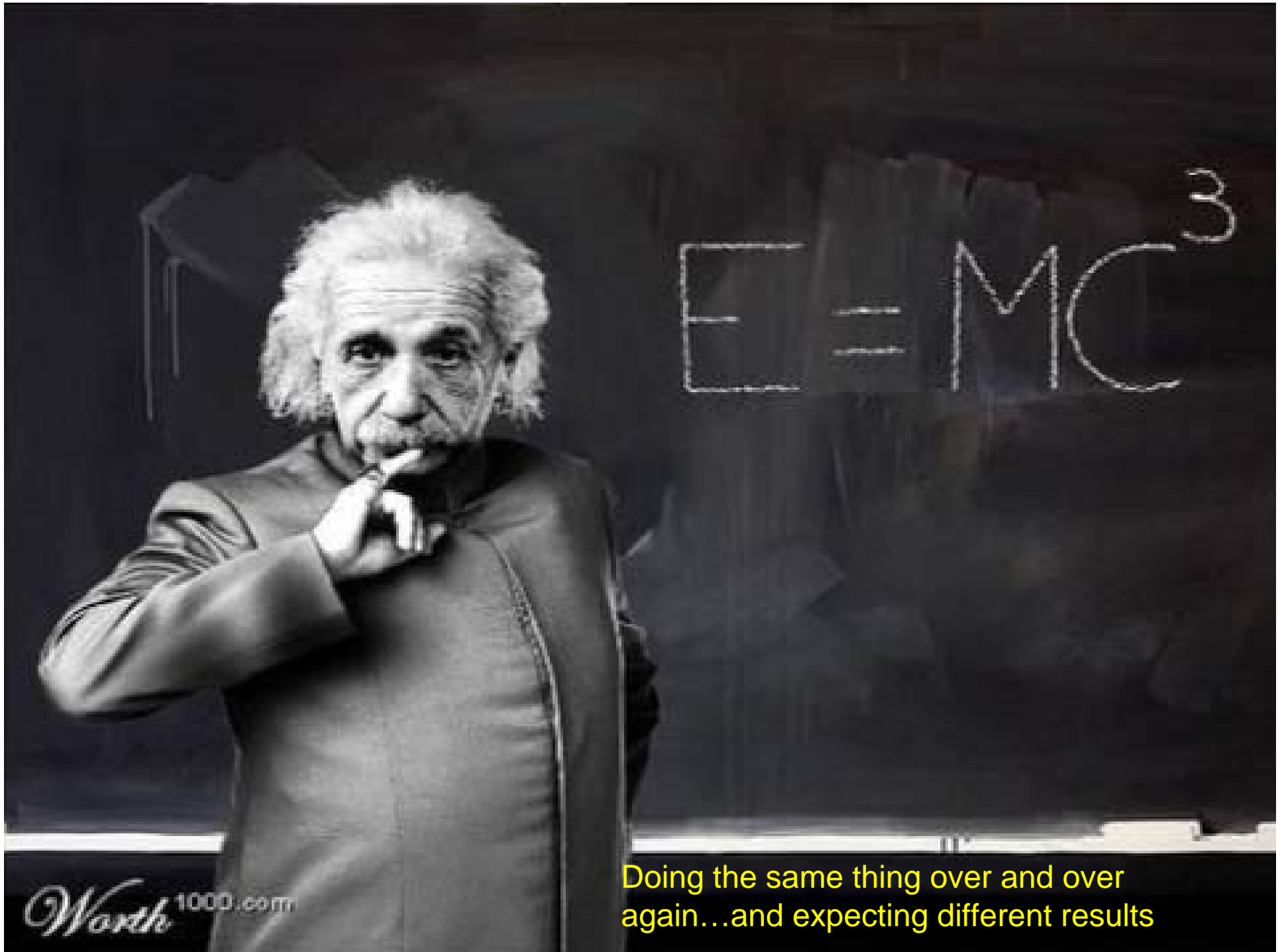
August 2009

Administrative Draft





Where will 3+ million hatchery native trout be stocked?



Worth1000.com

Doing the same thing over and over
again...and expecting different results

